

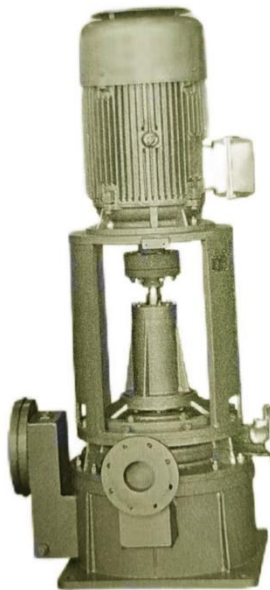
TDSP CLZ Series Two Stage Two Outlet Vertical Self-Priming Marine Pump

The CLZ series marine vertical self-priming two-stage two-outlet centrifugal pump is used for discharging fresh water and seawater. CLZ series marine vertical self-priming two-stage two-outlet centrifugal pump is widely used for cooling, firefighting, bilge, ballast, and other general drainage. CLZ series marine vertical self-priming two-stage two-outlet centrifugal pump can also be used as an alkali pump and distillation pump in seawater desalination, and CLZ series marine vertical self-priming two-stage two-outlet centrifugal pump can also be used for industrial and urban water supply. The temperature of the conveying medium by CLZ series marine vertical self-priming two-stage two-outlet centrifugal pump should not exceed 80°C.



Cooling Pump
Fire Pump
Bilge Pump
Ballast Pump

Two Stage
Two Outlet
Self Priming
Vertical Mounted
Centrifugal Pump
Marine Use



Model Definition of marine vertical self-priming two-stage two-outlet centrifugal pump

TDSP-150 CLZ -17/2 A

TDSP	Pump series by TRODAT
150	Suction inlet diameter, mm
CLZ	Ship use vertical self priming centrifugal pump
17	Integer of N_s (pump specific speed)/10
2	2 stage
A	The first impeller revised, B means the second impeller revised

Applied Options for marine vertical self-priming two-stage two-outlet centrifugal pump

Stage applied	Outlet pipe at the first stage	Outlet pipe at the second stage	Applied as
1	open	close	Ballast pumps, bilge pumps
2	close	open	Flushing-deck pumps, fire pumps

Model No	Main technical parameter(60Hz.3P.440V)					Motor power kW	Weight kg
	Capacity	Head	Speed	NPSH	Suction head		
	m ³ /h	m	r/min	m	m		
125CLZ-5/2	60/62	43/95	1750	3.2	6.8	37	710
125CLZ-9/2	140/70	35/89	1750	4	6	37	710
125CLZ-9/2A	135/65	22/75	1750	5.3	4.7	30	640
125CLZ-9/2B	170/75	37/86	1750	5.2	4.8	37	710
150CLZ-6/2	15/110	53/125	1750	5.1	4.9	75	970
150CLZ-17/2	180/115	40/112	1750	4.5	5.5	75	970
150CLZ-17/2A	170/115	24/88	1750	4.4	5.6		885
150CLZ-15/2	240/120	34/101	1750	5.2	4.8	75	970
150CLZ-12/2	150/145	49/112	1750	5	5	90	1050
150CLZ-7/2	260/145	34/95	1750	5.2	4.8	75	1010
150CLZ-7/2A	240/130	25/88	1750	5.2	4.8	75	1010
200CLZ-13/2	310/150	35/100	1750	4.2	5.8	90	1050
150CLZ-7-2B	240/220	48/115	1750	6.6	3.4	132	
250CLZ-9/2	420/210	32/104	1750	6.2	3.8	132	
250CLZ-9/2A	320/200	21/90	1750	6	4	90	
250CLZ-19/2	70/220	32/102	1750	5.8	4.2	110	1130

Model No	Main technical parameter((50Hz.3P.380V))					Motor power	Weight
	Capacity	Head	Speed	NPSH	Suction head		
	m ³ /h	m	r/min	m	m		
125CLZ-5/2	51/51	29.5/65	1450	2.8	7.2	22	510
125CLZ-9/2	116/58	24/61	1450	3.4	6.6		545
125CLZ-9/2A	112/54	15/51.5	1450	4.3	5.7	18.5	520
125CLZ-9/2B	141/62	25.5/59	1450	4.2	5.8	22	530
150CLZ-6/2	95/91	36.5/86	1450	4.1	5.9	45	786
150CLZ-17/2	149/95	27.5/77	1450	3.7	6.3	45	781
150CLZ-17/2A	141/95	16.5/60.5	1450	3.6	6.4	37	740
150CLZ-15/2	199/99	23.5/69.5	1450	4.2	5.8	45	775
150CLZ-12/2	124/120	33.5/77	1450	4.0	6	55	915
150CLZ-7/2	215/120	23.5/65	1450	4.2	5.8	45	828
150CLZ-7/2A	199/108	17/60.5	1450	4.2	5.8	37	795
200CLZ-13/2	257/124	24/68.5	1450	3.5	6.5	55	925
150CLZ-7-2B	199/182	33/79	1450	5.1	4.9	75	1082
250CLZ-9/2	348/174	22/71.5	1450	4.9	5.1	75	1078
250CLZ-9/2A	265/166	14.5/62	1450	4.2	5.8	55	902
250CLZ-19/2	389/182	22/70	1450	4.6	5.4	75	1080